



The Gifts



Magazine



2026



STORM



STRUCTURED FITTED

Designed with a structured build that retains its form and has a crown that is slightly elevated.



CURVED VISOR

This cap is designed to keep a proper curved shape at all times.



ADJUSTABLE VELCRO CLOSURE

Uses an adjustable **velcro** closure system that also guarantees an excellent fit for all sizes.

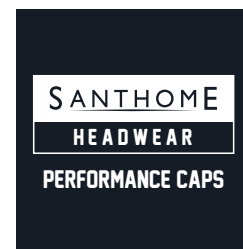
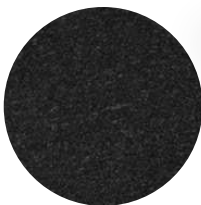


95% RECYCLED POLYESTER

An eco-friendly cap that is made of 95% recycled polyester and 5% spandex.



SOFT TEXTURE
FOR A STYLISH
FEEL & LOOK



A lightweight and breathable casual cap designed for everyday comfort—
perfect for walks, errands, or a day out at the mall.

STORM - HWSN 7127 ● Grey | HWSN 7126 ● Black

- Made from 95% recycled polyester for a sustainable touch
- Soft textured fabric with 5% spandex for added stretch offers everyday comfort
- Structured 6-panel design keeps its shape
- Fitted style gives a sleek, modern look.

Branding Options: Embroidery, Heat Transfer

Product Size: 22 x 22 x 16 cm

Packing Details: 59 x 44 x 39 cm ; 100 pcs / carton; GW-12kgs



An adjustable Velcro band allows for quick and easy adjustments.

Offers flexible customization options to suit your requirements.



**STRUCTURED FITTED**

Designed with a structured build that retains its form and has a crown that is slightly elevated.

**100% RECYCLED POLYESTER**

An eco-friendly cap that is made of 100% recycled polyester.

**CURVED VISOR**

This cap is designed to keep a proper curved shape at all times.

SANTHOME
HEADWEAR

ULTRA

**ADJUSTABLE BUCKLE**

Adjustable back closure strap made of high quality metal buckle to ensure great fit for any size.



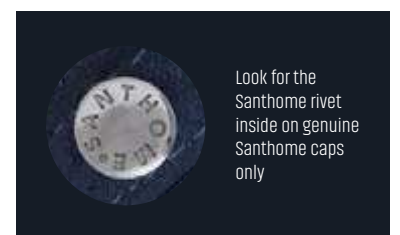
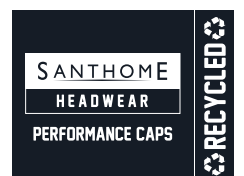
Fabric is a high quality breathable polyester with our advanced moisture management system (DryNCool)



ULTRA - HWSN 516 ● Black | HWSN 517 ○ White
HWSN 518 ● Navy Blue | HWSN 4010 ● Royal Blue

- Structured 6-panel recycled cap
- Made from 100% recycled polyester (100% RPET)
- Contains sweat wicking DryNCool moisture management tech
- Sustainable & Sporty Style

Branding Options : Heat Transfer Printing, Embroidery
Product Size : 27 x 19 x 12 cm



Look for the Santhome rivet inside on genuine Santhome caps only

**OTTOMAN KNIT FABRIC**

Made of ottoman knit fabric-
A heavy, plain, textured fabric with
horizontal ribbing.

**STRUCTURED FITTED**

Designed with a structured build
that retains its form and has a
crown that is slightly elevated.

**CURVED VISOR**

This cap is designed to keep
a proper curved shape at all
times.

SANTHOME
HEADWEAR

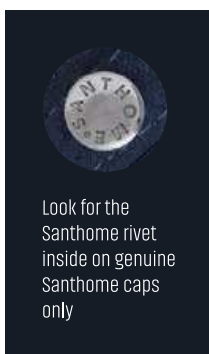
TITAN

**SILENT VELCRO CLOSURE**

Uses a unique
Silent velcro closure
system that also guarantees an
excellent fit for all sizes.

**97% RECYCLED POLYESTER**

An eco-friendly cap that is made of
97% recycled polyester and 3% spandex.
Spandex (for stretch) enables a great head fit.



TITAN - HWSN 501 ○ White | HWSN 502 ● Black
HWSN 503 ● Navy Blue | HWSN 504 ● Red
HWSN 505 ● Royal Blue | HWSN 506 ● Dark Grey

- 97% recycled polyester, 3% spandex
- Adjustable velcro strap
- Curved visor
- Stylish, everyday wear
- Available in 6 colors

Branding Options : Heat Transfer Printing, Silkscreen Printing, Embroidery
Product Size : 27.5 x 19 x 12 cm

**UNSTRUCTURED FITTED**

Designed with an unstructured build that offers major comfort and a relaxed, casual vibe to your look.

SANTHOME
HEADWEAR

FLEX

**ADJUSTABLE BUCKLE**

Adjustable back closure strap made of high quality metal buckle to ensure great fit for any size.

**CURVED VISOR**

This cap is designed to keep a proper curved shape at all times.



60% RECYCLED COTTON
40% RECYCLED POLYESTER

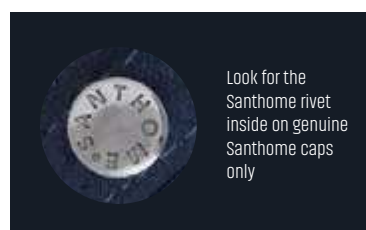
An eco-friendly cap that is made of 60% recycled cotton and 40% recycled polyester.



FLEX - HWSN 513 ● Sky Blue | HWSN 514 ● Beige
HWSN 515 ● Navy Blue

- Unstructured trendy 6-panel cap
- 60% recycled cotton, 40% recycled polyester
- Adjustable metal buckle
- Curved visor
- Outdoor, casual style

Branding Options : Embroidery, Heat transfer printing
Product Size : 27 x 19 x 12 cm



Look for the Santhome rivet inside on genuine Santhome caps only

**STRUCTURED FITTED**

Designed with an unstructured build that retains its form and has a crown that is slightly elevated.

SANTHOME
HEADWEAR

SWIFT

**SILENT VELCRO CLOSURE**

Uses a unique **silent velcro** closure system that also guarantees an excellent fit for all sizes.

**CURVED VISOR**

This cap is designed to keep a proper curved shape at all times

**DOUBLE MESH BACK PANEL**

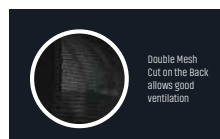
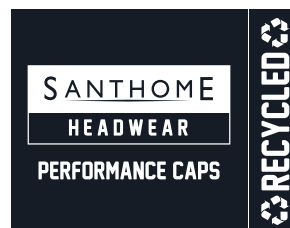
Trucker cap made with 100% polyester double mesh back panel for extra air and breathability.



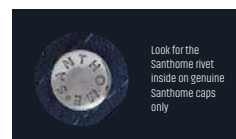
SWIFT - HWSN 507 ● Black | HWSN 508 ● White
HWSN 509 ● Navy Blue

- Structured 6-panel trucker cap
- Double mesh allows air in & keeps heat out
- Silent Velcro strap (no screeching)
- Premium feel
- 35% cotton, 65% polyester

Branding Options: Heat Transfer Printing, Embroidery
Product Size: 26 x 19 x 12 cm



Double Mesh
Cut on the Back
allows good
ventilation



Look for the
SantHOME rivet
inside on genuine
SantHOME caps
only

**STRUCTURED FITTED**

This cap offers a sleek, custom fit with flexible fabric that molds to your head for all-day comfort.

DELTA

This cap will keep your head feeling sweat-free and comfortable even when you sweat a lot.

**CURVED VISOR**

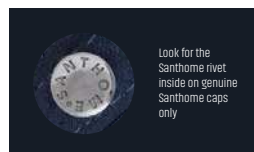
This cap is designed to keep a proper curved shape at all times.



Green

PREMIUM FIT

With Premium elastic stretch band and 5% spandex fabric, this cap offers a comfort fit



White



Navy Blue



Black



Marine Blue



Grey



DELTA - HWSN 4002 ○ White | HWSN 4003 ● Navy Blue
HWSN 4004 ● Green | HWSN 4005 ● Grey
HWSN 4006 ● Black | HWSN 4007 ● Marine Blue

- Lightweight athletic fabric
- Stretch-fitted elastic sweatband
- DryNCool® moisture-wicking tech
- Ideal for sports, travel, gym, outdoor
- 95% polyester, 5% spandex
- One size fits all

Branding Options : Embroidery, Heat Transfer Printing
Product Size : 27 x 19 x 12 cm

**STRUCTURED FITTED**

Designed with an structured build that retains its form and has a crown that is slightly elevated.

SANTHOME
HEADWEAR

ACE

**ADJUSTABLE BUCKLE**

Adjustable back closure strap made of high quality metal buckle to ensure great fit for any size.

**CURVED VISOR**

This cap is designed to keep a proper curved shape at all times.

**HIGH TECH LASER CUT**

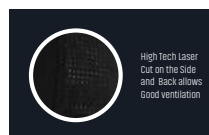
A lightweight, performance polyester cap with laser cut design for maximum ventilation.



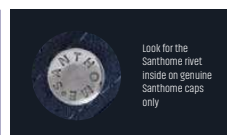
ACE - HWSN 510 ● Black | HWSN 511 ● White
HWSN 512 ● Navy Blue

- DryNCool moisture management
- Stable metal buckle (adjustable)
- Curved visor
- Laser-cut side/back holes for ventilation
- Cool & comfortable for sun/sports
- Classy, sporty look

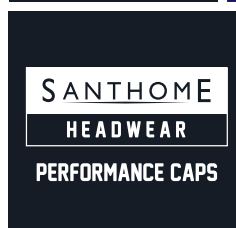
Branding Options : Heat Transfer Printing, Embroidery
Product Size : 27 x 19 x 13 cm



High Tech Laser Cut on the Side and Back allows Good ventilation



Look for the Santhome rivet inside on genuine Santhome caps only



APEX



LIGHTWEIGHT

This cap provides effortless comfort and sun protection with a breathable, airy design.



MOISTURE WICKING

This cap will keep your head feeling sweat-free and comfortable even when you sweat a lot.



CURVED VISOR

This cap is designed to keep A proper curved shape at all Times.




APEX - HWSN 4008 ● Black | HWSN 4009 ○ White

- Lightweight performance visor
- DryNCool® moisture-wicking
- Adjustable velcro strap
- 95% polyester, 5% spandex

Branding Options : Embroidery
Product Size : 27 x 19 x 12 cm



SANTHOME

DELUXE PIQUE MESH SPANDEX FITTED CAPS

SC 105 ○ White/White sandwich
● Red/Black sandwich

- Nu-Fit® Stretch-Fitting tech
- One size fits all
- Pique mesh for ventilation
- Spandex for sweat absorption
- Contrast sandwich detail

Branding Options : Heat Transfer Printing, Embroidery
Packing Details : 62x 36 x 56 cms ; 150 pcs /carton ; gw/nw: 16.5 kg / carton





Black



White



Navy Blue



Royal Blue



Green

SANTHOME

NARVA- HWSN 523 ● Black | HWSN 524 ○ White | HWSN 525 ● Navy Blue
HWSN 526 ● Royal Blue | HWSN 527 ● Red | HWSN 528 ● Green

- 100% cotton Heavy Brushed Twill Cap
- 5-panel promotional cap - good logo space in front
- All colors matched to Santhome BDNC Polo
- Adjustable metal buckle

Branding Options : Silkscreen Printing, Heat Transfer Printing, Embroidery



Red



SANTHOME

TARTU- HWSN 521 ● Black | HWSN 522 ○ White

- 100% cotton Heavy Brushed Twill Cap
- 6-panel promotional cap
- Adjustable metal buckle & Curved visor

Branding Options : Silkscreen Printing, Heat Transfer Printing, Embroidery



H/L Cap ● Maroon

- 100% Heavy Brushed Cotton cap with metal buckle

Branding Options : Silkscreen Printing, Heat Transfer Printing, Embroidery



**REVERSIBLE
HAT**



TRAIL - HWSN 4001 ● Black/white (Reversible)

- Reversible canvas bucket hat
- Soft, durable cotton twill
- Relaxed bucket silhouette
- Easy style switch
- Comfortable for all adventures

Branding Options : Silkscreen Printing, Heat Transfer Printing, Embroidery
Product Size : ø58 cm



**LIGHTWEIGHT &
VERSATILE**

Offers versatile comfort & ease, making it perfect for any activity.



SUN PROTECTION

Shield your face from harmful UV rays while keeping you stylishly cool.



100% COTTON

Has a refined look, combining relaxed with sophisticated style.



SANTHOME PANAMA HAT - HWSN 7117 ● Natural

- Wide-brimmed Panama/straw hat
- Black outer ribbon
- Inner comfort band
- Adjustable fit
- One size fits all
- High quality finish

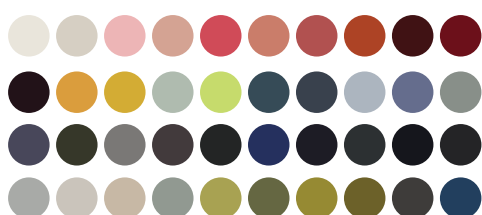
Branding Options : Silkscreen Printing, Heat Transfer Printing on Ribbon
Product Size : ø59 cm



MAKE FULLY CUSTOMIZED CAPS

Choose among our premium retail quality headwear selection.

- ▶ **Minimum:**
144 units only
- ▶ **Sample Delivery:**
2-3 weeks
- ▶ **Bulk Order:**
8 weeks by air
12-15 weeks by sea
- ▶ **Choose among 40 color options:**



STYLES

Camper Hat



Unstructured



Trucker



Classic Cap



Fitted



Flat Visor



CLOSURE



Plastic Strap
aka Snap Back



Leather Strap
with Buckle



Silent Velcro



Polyester Strap
with Clip



Cloth Strap
with Velcro



Cloth Strap
with Buckle



Elastic or
Fitted

PEAK/BRIM



Accent
Panels



Sandwich
Peak



Contrast
Underbill



Reflective
Piping

SPECIAL BRANDING



Cap Tape



Under
Peak



Reflective
Printing



Silicon
3D



Sublimation



3D
Patch